





Company Profile

**We serve large and most
reputed enterprises
across varied industries**

Our Mission:

Our Mission is to provide Good Quality Services which satisfy the needs of the peoples in the industry.

By providing our customers good of the best quality that meets the demand of each area and the required quantity at a reasonable price when they need them.

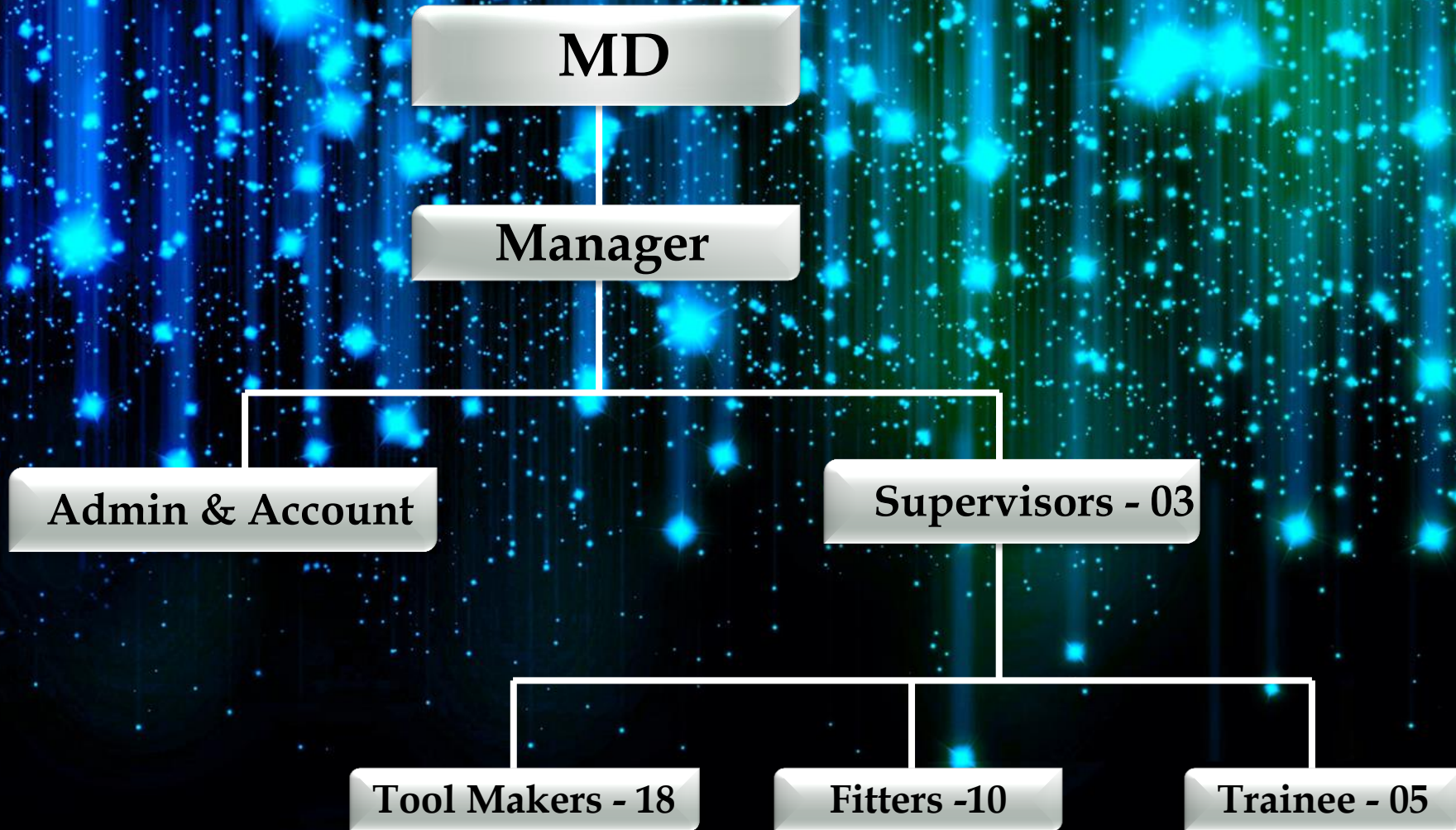
Our Vision is:

Improve customer tooling life
Enhance quality of stamping product.
Improve up time.
Reduce cost to our customers.
Increase our supply side flexibility.
Increase our process control
Customer Satisfaction.



Our Team
Success Behind Us...

Organization Chart





Our Major Services





Our Plant



We gave our best service to our Customers and Now We are planning to build a New Manufacturing Plant. So we can provide better and high level support to our Customers and achieve their goals easily.



Plant Inside

Manufacturing Plant



Crane 10 T & 5 T



WMW-800 T



MANPOWER
SUPPORT



We boast a strong work force ranging from apprentices through to veterans of the industry.

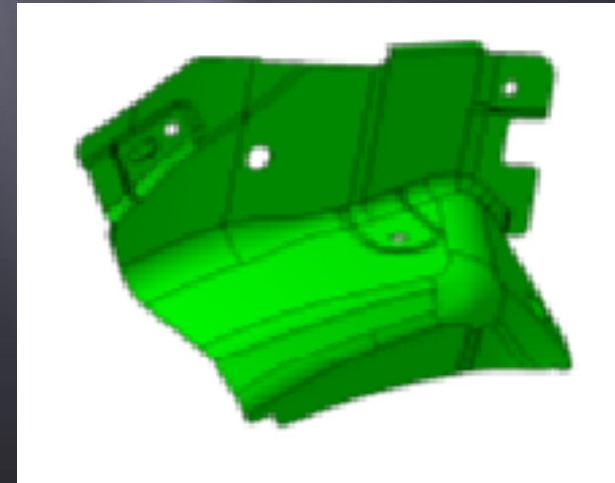




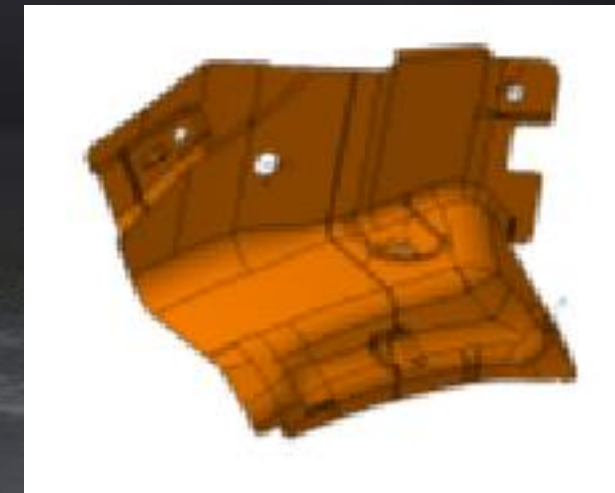
Reverse Engineering Die Modification Part

Tool Modification Successfully done by Reverse Engineering Process (Ford)

Before Modification Tool & Part



After Modification Tool & Part



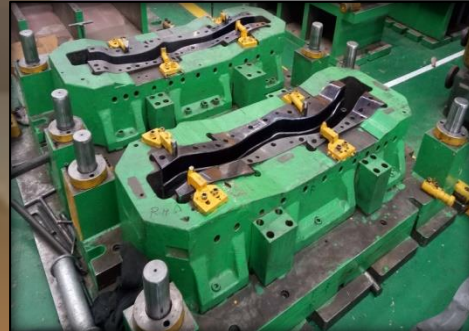
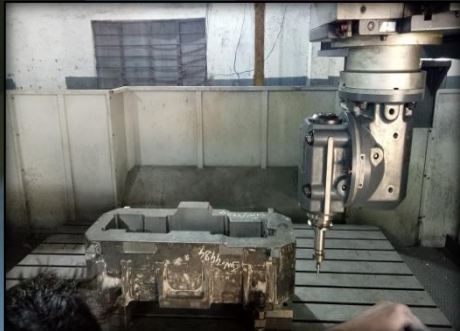
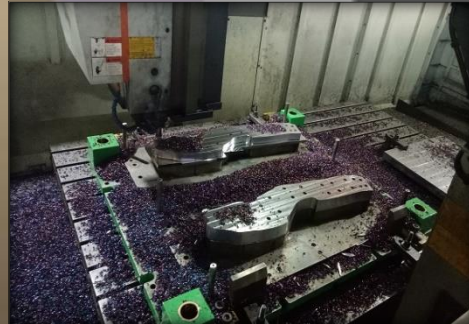
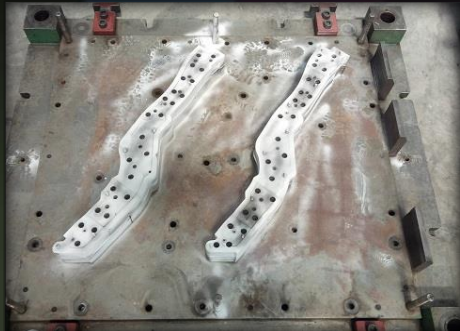
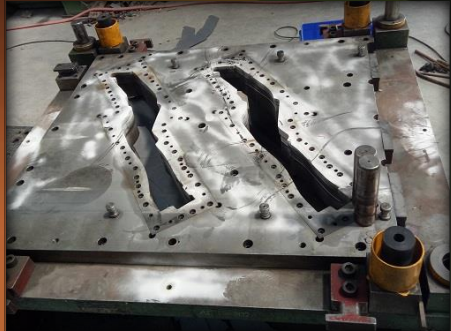


Successfully Modify the Tools by 3D Scan Reverse Engineering Ford Part





Successfully Modify the Tools by 3D Scan Reverse Engineering M300 Project GMI





REVERSE ENGINEERING

Successfully Modify the Tools by 3D Scan Reverse Engineering M300 Project GMI





Die Assembly, Try-Out and Buy-Off

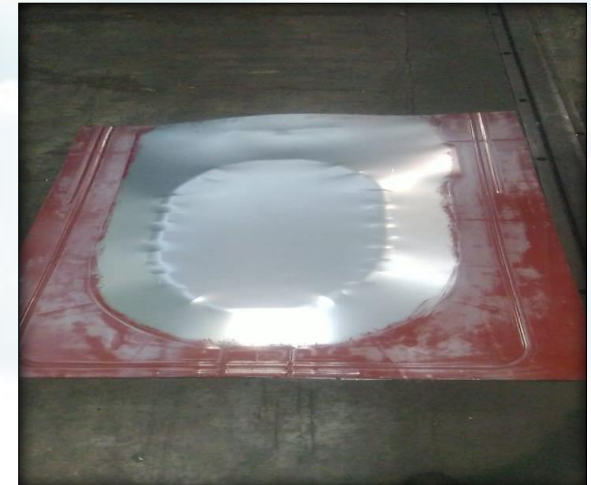
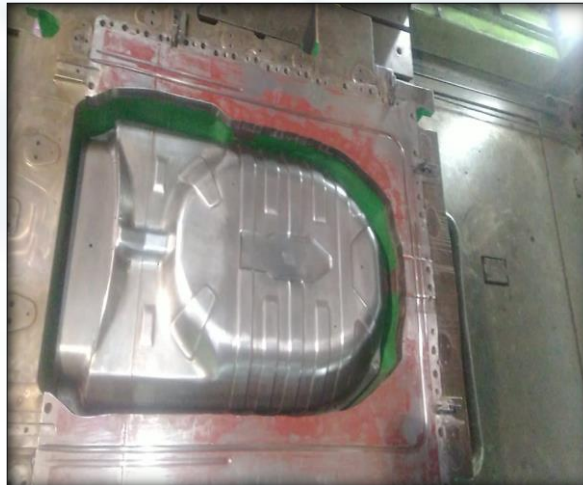
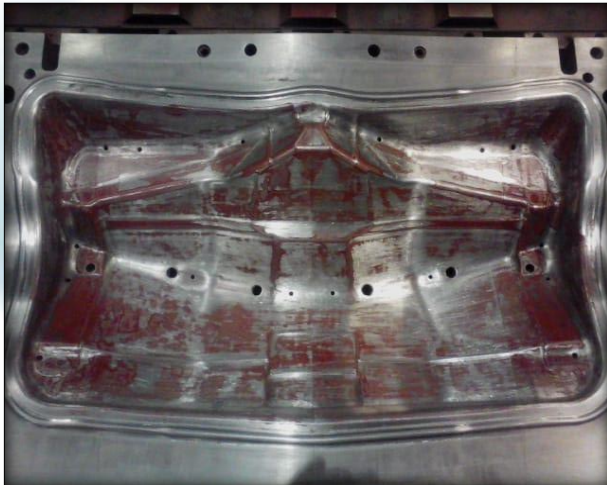
All First Stage to final Stage Parts Proving And Buy-Off Work.





HLC & Buy Off Work

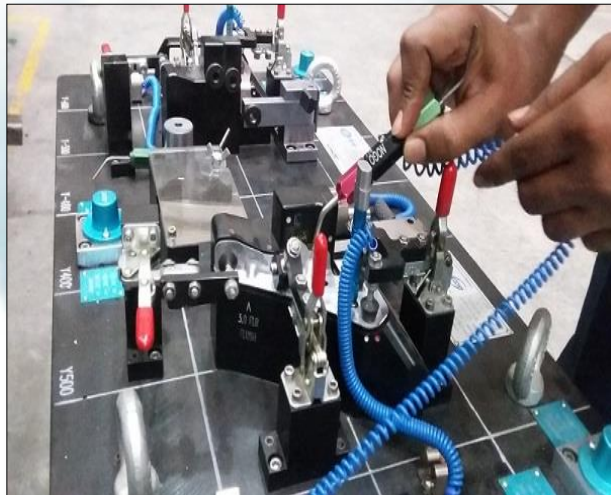
Homeline Commissioning, Buy-Off & Die Spotting/ Bedding Work.





HLC & Buy Off Work

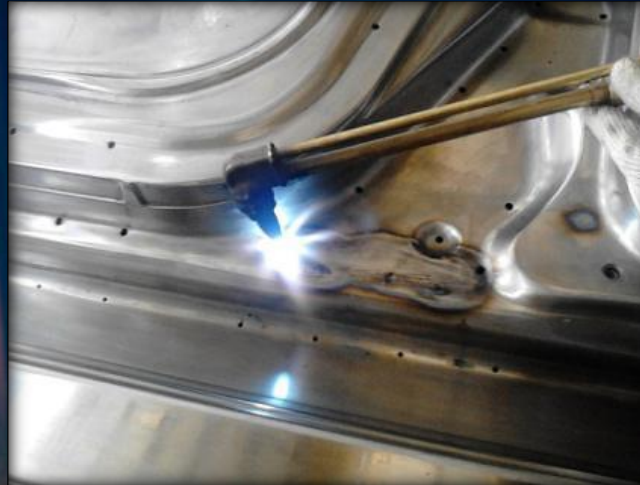
Static / Dynamic Check during HLC & BUY-OFF.





Client Site Support

- ❖ Dies Reconditioning.
- ❖ Dies Try-Out.
- ❖ Daily Production Wise Dies Planning Work.
- ❖ Part Quality Improvement.
- ❖ Dies PM Work.
- ❖ On Line Part Problems & production Supports.
- ❖ Part ECN.
- ❖ Trim Line Modifications.
- ❖ Blank Development.
- ❖ Assembly Work.
- ❖ Dies Buy-off Work





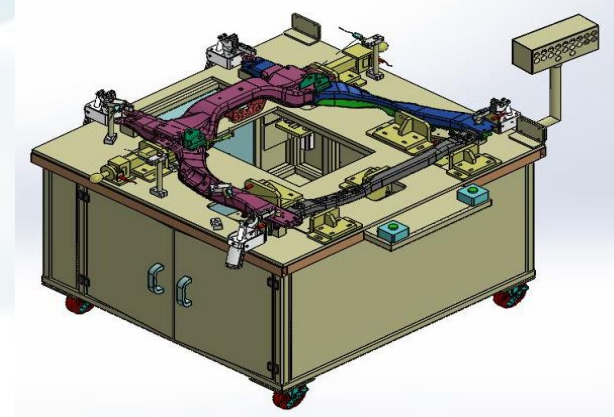
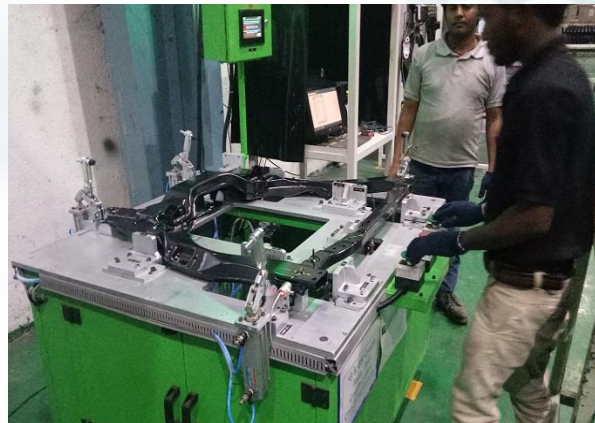
AUTOMATION FIXTURE WORK & SPM

Automation Fixture Work Assembly & Mechanism.

Maruti Suzuki Project YJC+YBM Fender Piercing Automation Fixture :-



GMI Cradle Nut Detection Checking SPM :-





As We Achieved Below Results



TO,
SHRI GANESHA TOOLING ENGINEERING

Date :- 12.01.2018

Dear Sir,

We thank you for the supplies and support to TAL
Please find below Delivery and Quality Rating for the period Oct-Dec 2017

Vendor code	Vendor Name	Delivery Rating Category	Quality Rating Category
CC0255	SHRI GANESHA TOOLING ENGINEERING	GOLD	GOLD

We appreciate your efforts and would like you to Improve and Maintain the rating.

Kindly acknowledge the receipt of letter & give us feedback if any

Thanking you
For TAL Manufacturing Solutions Ltd.

Ganapathi Prabhu
Manager-SCM

Important Note:-

- Supplier should maintain Quality Rating always Gold
- If Delivery Rating is Gold & Silver then Supplier Shall maintain & Improve performance
- If Delivery Rating is Bronze then Supplier shall Improve & Maintain performance
- If Delivery Rating is Yellow then
 - Supplier shall Improve performance
 - supplier shall give corrective action for improvement
 - If supplier rating is same (YELLOW) for three consecutive Quarter then TAL may minimise Business.

Criteria of Rating

Rating Category	Percentage for Quality	Percentage for Delivery
Gold	100	100
Silver	99.99 to 99	99.99 to 98
Bronze	98.99 to 98	97.99 to 95
Yellow	97.99 to 95	94.99 to 90
Red	94.99 to Below	89.99 & Below



TAL MANUFACTURING SOLUTIONS LIMITED

Nagpur Works : Sector -3 MIHAN SEZ Nagpur-441108

Tel 91 07103 645531, CIN : U29100PN2000PLC130290

Registered Office : PDD Building TATA Motors Campus, Chinchwad, Pune 411 033

Tel 91 20 6613 5404 Fax 91 20 6613 5404 www.tal.co.in

A TATA Enterprise





Project Experience

- ❖ **Successfully Modify the Tools by 3D Scan Reverse Engineering M300 Project GMI & Ford Project Also M&M Nashik, Pune, Kandewali.**
- ❖ **Manufacturing of Press Tools Dies, Jigs, Fixtures, SPM.**
- ❖ **Skin Panel Die 's Maintenance and Repair.**
- ❖ **New Tool Trials / Tool Buy-off / HLTO / HLC/ BIW Fixture Work**
- ❖ **GM CHINA CN100 Project Handing Dies & Fixture Modifications Support . (Halol, Gujarat)**
- ❖ **ERC CAB (Modification & Made by Proto CAB & Fixture Assembly) From TATA MOTORS ERC Dep.**
- ❖ **Dies Reconditioning.**
- ❖ **FIAPL Skin Panel Dies Work in JBM (MA) Chakan. Also Fixture Work At fialp Plant Inside.. (Body Side, Fender, Hood, Door, Decklid Panel, Roof And TRP Project .)**
- ❖ **Blanking & Transfer Line Dies Modification Cosma Chennai & Talegaon ECN Part Modification. (Trim Line Change, Flange Change, Hole Shift, Draw Dies Modifications, Hole Addition.)**
- ❖ **U321 Europe Ford Project Transfer & Blanking Line Dies HLC & Buy-Off In Cosma Pune & Chennai.**



Why Choose Us?



Skilled Manpower which Having Experience on Transfer Line Dies, Blanking, Progressive & Skin panel (Outer Panel) Dies.

- ✓ Homeline Commissioning & Buy-Off Projects are Completed Successfully up to Customer Satisfaction.
- ✓ Online Effective Components Defect Re-solution.
- ✓ Expertise Manpower for Skin Panel Dies (Body Side, Fender, Roof, Door, Hood, Decklid, Inner-Outer All Dies)
- ✓ Successfully implemented thickness reduction project of 10% Material Reduce LINEA, PUNTO FIAT.
- ✓ Capacity From Small Dies To Large Dies, B.S.O. Also.
- ✓ In-House Manufacturing Capacity

COMMITMENT

COMPASSION

RESPECT

ETHICAL

AFFORDABILITY



Our Clients

Who Makes Us Proud

Mahindra

Gudrej | TOOLING

MAGNA
COSMA INTERNATIONAL

TAL

CHASYS

JBM Group



Gestamp

JYOTI
SINCE - 1987
Toolings & Press Components Pvt. Ltd.

LEAN
Automation

INDIA

KRISHNA

AT 长方模具
ACTION TOOL

VT 无锡威唐工业技术股份有限公司
VT Industrial Technology

RYEG
High technology &
Company of confidence





Thank You!!

SHRI GANESHA TOOLING ENGINEERING

Sangmeshwar N. Madarde

MD

E-Mail : sgtemd@gmail.com / info@sgte.in

Mob : +91-9096227221 / +91-7385654100

Website : www.sgte.in

Head Office Address :

Gat. No.-53, Om Sai Complex,
Near IT Park, DehuAlandi Raod,
Talwade Chowk, Talwade, Pune-
411062. (INDIA)

